

KKT A4 | AISI316

CONE-SHAPED CONCEALED HEAD SCREW

CE
EN 14592

AGGRESSIVE ENVIRONMENTS

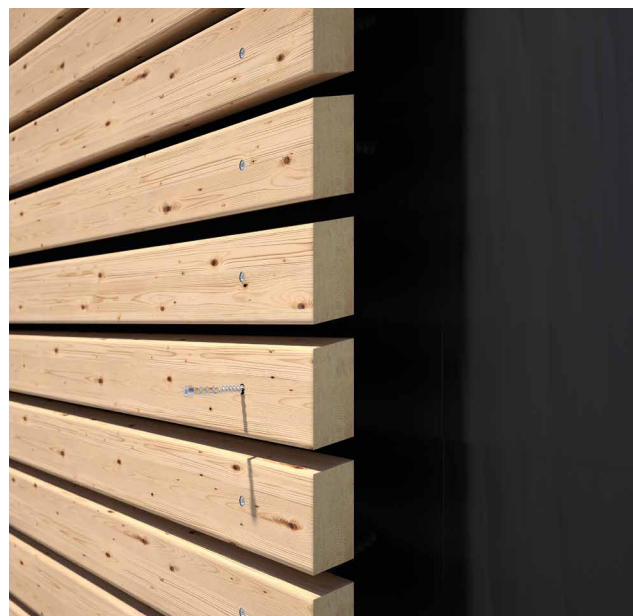
A4 | AISI316 stainless steel version ideal for very aggressive environments, for acidic, chemically treated wood and very high internal moisture (T5). KKT X version with short length and long bit for use with clips.

COUNTER THREAD

The inverse (left-hand) under-head thread guarantees excellent grip. Small conical head to ensure it is hidden in the timber.

TRIANGULAR BODY

The three-lobed thread makes it possible to cut the wood grain during screwing. Exceptional timber pull-through.



DIAMETER [in]

0.14 0.21 0.32

LENGTH [in]

13/16 13/16 3 1/8 12 5/8

EXPOSURE CONDITION



ATMOSPHERIC CORROSIVITY

☒ C1 ☐ C2 ☐ C3 ☐ C4 ☐ C5

WOOD CORROSIVITY

☐ T1 ☐ T2 ☐ T3 ☐ T4 ☐ T5

MATERIAL

A4
AISI 316 A4 | AISI316 austenitic stainless steel
(CRC III)



KKT A4 | AISI316



KKT X A4 | AISI316



long insert
included




FIELDS OF USE


Outdoor use in highly aggressive environments. Wooden boards with density of < 550 kg/m³ [G = 0.63] (without pre-drill) and < 880 kg/m³ [G = 1.05] (with pre-drill). WPC boards (with pre-drill).

CODES AND DIMENSIONS

KKT A4 | AISI316

	d_1 [mm] [in]	CODE	L		b		A	pcs
			[mm]	[in]	[mm]	[in]	[in]	
		KKT540A4	43	1 11/16	25	1	3/4	200
	5,1	KKT553A4	53	2 1/16	35	1 3/8	3/4	200
0.21		KKT560A4	60	2 3/8	40	1 9/16	1	200
#11		KKT570A4	70	2 3/4	50	1 15/16	1	100
TX 20		KKT580A4	80	3 1/8	53	2 1/16	1 1/4	100

KKT X A4 | AISI316 - fully threaded screw

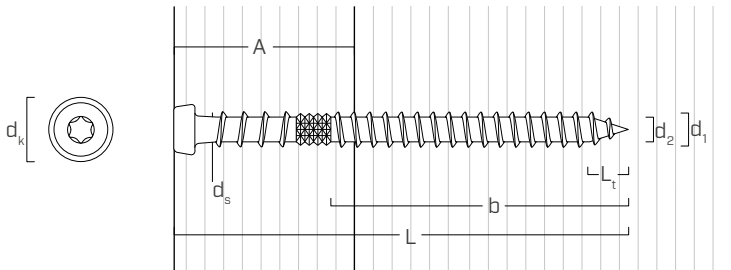
	d_1 [mm] [in]	CODE	L		b		A	pcs
			[mm]	[in]	[mm]	[in]	[in]	
		KKT520A4(*)	20	13/16	16	5/8	3/16	200
5,1		KKT525A4(*)	25	1	21	13/16	3/16	200
0.21		KKT530A4(*)	30	1 3/16	26	1 1/32	3/16	200
#11		KKT540A4	40	1 9/16	36	1 7/16	3/16	100
TX 20								

(*)Not holding CE marking.

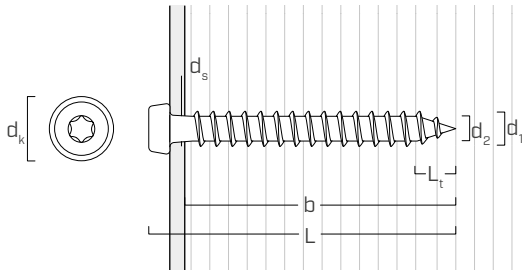
 LONG BIT INCLUDED code TX2050

GEOMETRY

KKT A4 | AISI316



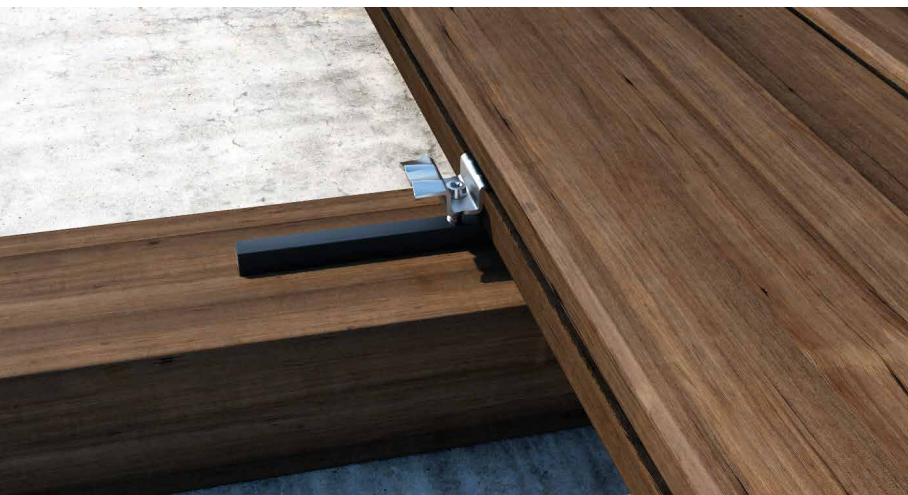
KKT X A4 | AISI316



Nominal diameter	d_1	[in] ⁽¹⁾	0.21
		[mm]	5,1
Outer thread diameter	d_1	[in]	0.201
Head diameter	d_k	[in]	0.266
Root diameter	d_2	[in]	0.134
Shank diameter	d_s	[in]	0.159
Tip length	L_t	[in]	0.201
Pre-drilling hole diameter ⁽²⁾	d_v	[in]	1/8 - 9/64

⁽¹⁾The nominal diameter of the screw is converted into imperial units and rounded up to the nearest decimal point.

⁽²⁾For high density materials, pre-drilled holes are recommended based on the wood species.



KKT X

Ideal for fastening standard Rothoblaas clips (TVM, TERRALOCK) in outdoor environments. Long bit included in each package.